

Kameraia, Badru og det gamle bjerg

Kristoffer Rosing-Schow

♩=72

Eftermiddag på Savannen 1

Musical notation for 'Eftermiddag på Savannen 1' in G major, 4/4 time. The piece starts with a treble clef and a key signature of one sharp (F#). The tempo is marked as quarter note = 72. The notation includes a first ending bracket with a double bar line and a repeat sign, followed by a second ending bracket with a double bar line and a repeat sign. The piece concludes with an 'Open' instruction.

Man kan finde på flere roller...

Eftermiddag på Savannen 2

Musical notation for 'Eftermiddag på Savannen 2' in G major, 4/4 time. The notation includes a first ending bracket with a double bar line and a repeat sign, followed by a second ending bracket with a double bar line and a repeat sign. The piece concludes with an 'Open' instruction.

5

Dyrene Nynner

Musical notation for 'Dyrene Nynner' (measures 9-12) in G major, 4/4 time. The notation consists of a single staff with a treble clef and a key signature of one sharp (F#).

9

Musical notation for 'Dyrene Nynner' (measures 13-16) in G major, 4/4 time. The notation consists of a single staff with a treble clef and a key signature of one sharp (F#).

13

Musical notation for 'Dyrene Nynner' (measures 17-20) in G major, 4/4 time. The notation consists of a single staff with a treble clef and a key signature of one sharp (F#).

17

Musical notation for 'Dyrene Nynner' (measures 21-24) in G major, 4/4 time. The notation consists of a single staff with a treble clef and a key signature of one sharp (F#).

21

Dyrene synger

Musical notation for 'Dyrene synger' (measures 25-28) in G minor, 4/4 time. The notation consists of a single staff with a treble clef and a key signature of two flats (Bb, Eb).

25

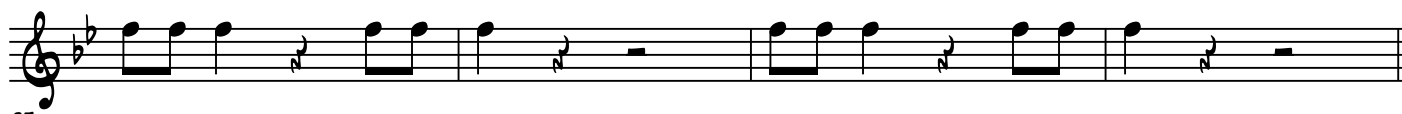
Musical notation for 'Dyrene synger' (measures 29-32) in G minor, 4/4 time. The notation consists of a single staff with a treble clef and a key signature of two flats (Bb, Eb).

29

Musical notation for 'Dyrene synger' (measures 33-36) in G minor, 4/4 time. The notation consists of a single staff with a treble clef and a key signature of two flats (Bb, Eb).

33

Kameraia, Badru og det gamle bjerg



Forhindringer på vejen

Ankommet til bjerget

Open

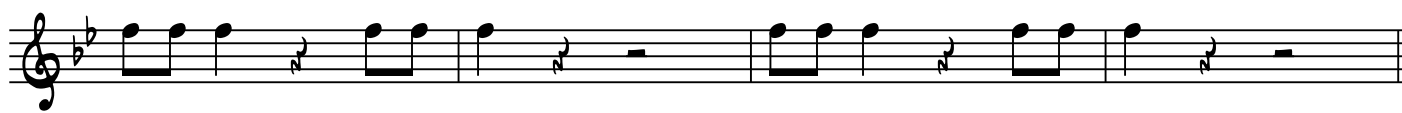
Open



Kravler op af det gamle bjerg



Dette , men måske også mere end det - og vildere og vildere



Oppe på toppen



Lad det ske

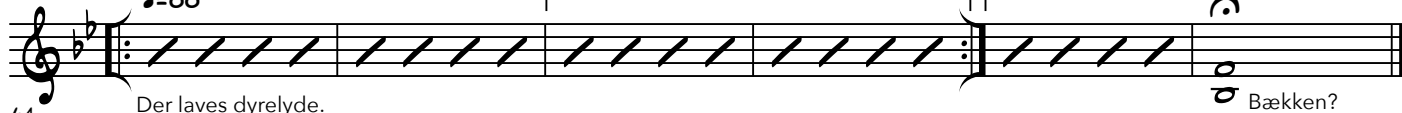


Siger godnat til alle dyrene

$\text{♩} = 88$

X

Til sidst



Der laves dyrelyde.
Hver gang et dyr er blevet spillet,
vinker alle de andre elever og siger
'Godnat!'

Bækken?
Gong?
Rørklokke?